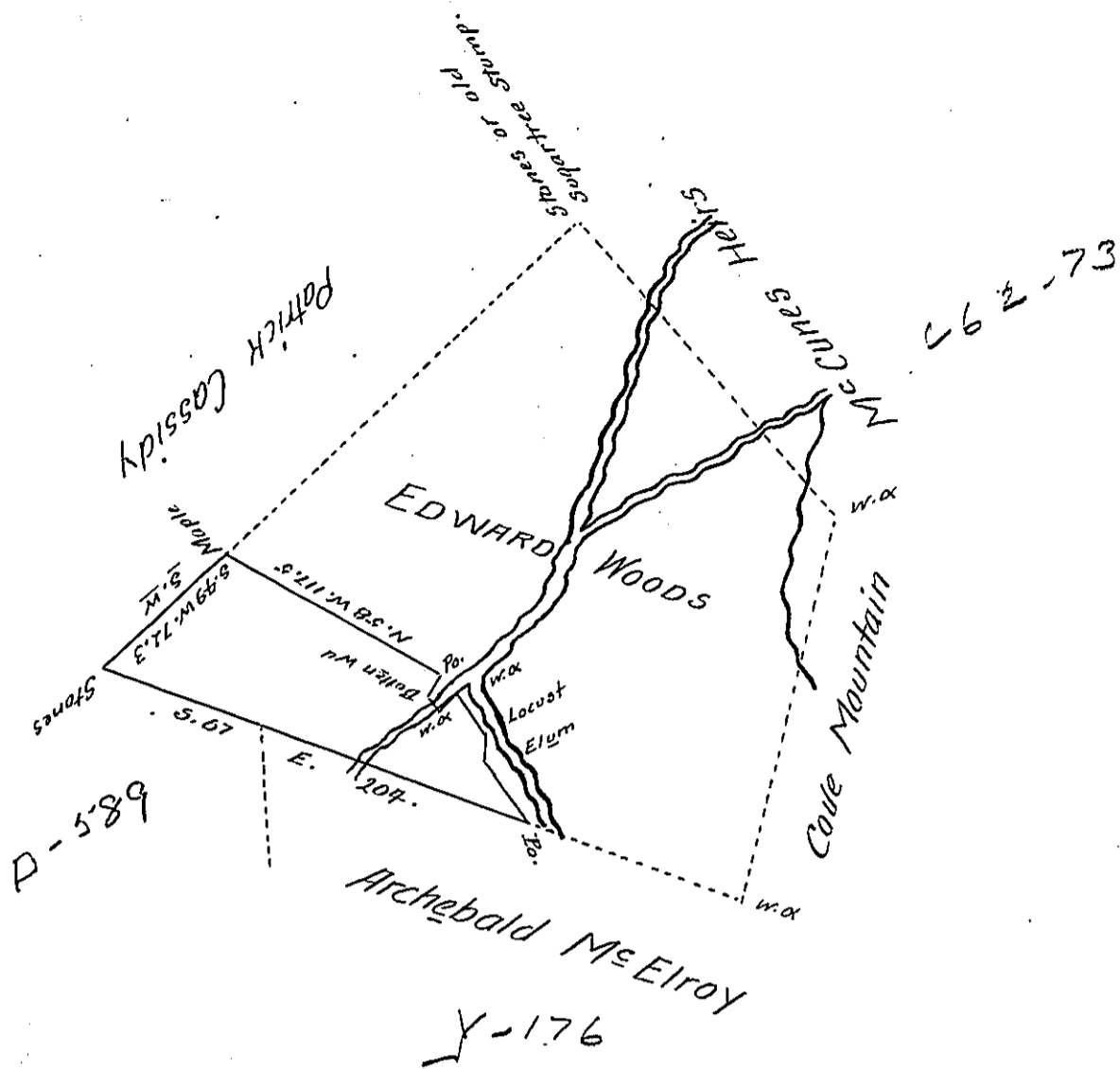


Courses & distances from the post to the post at the end of line N. 58 W. are

- N. 35 W. 31 Elm
 - N. 4 1/4 W. 12 Locust
 - N. 31 W. 22 W. α
 - S. 62 W. .8 W. α
 - N. 39 W. 5.2 B. Wood
 - N 40 E. 10.7 Post
- at the end of the line N. 58 W.



Situate on the Frankstown branch of Juniata in Frankstown Township Huntingdon County containing fifty acres one hundred & fifty five perches & allowance of six per cent for roads, first surveyed the 2nd Decr 1766 In pursuance of an Order of survey granted to Edward Woods dated the 1st of August 1766 No. 19 & also surveyed the 27th of Octr 1803, in pursuance of a Warrant granted to John Wareham dated the 5th day of Sept^r 1803, it then was said to contain 325^{1/2} & 11 perches this part resurveyed and dividid from the residue of of said tract the 30th day of April 1823

Wm Reed D. S.

Samuel Cochran Esqr

Surveyor General

204
132.3
71.7

107 116
50 150

158

266
160
106

IN TESTIMONY that the above is a copy of the original remaining on file in the Department of Internal Affairs of Pennsylvania, made conformably to an Act of Assembly approved the 16th day of February, 1833, I have hereunto set my Hand and caused the Seal of said Department to be affixed at Harrisburg, this first day of June 1904.

Isaac P. Pearson
Secretary of Internal Affairs.